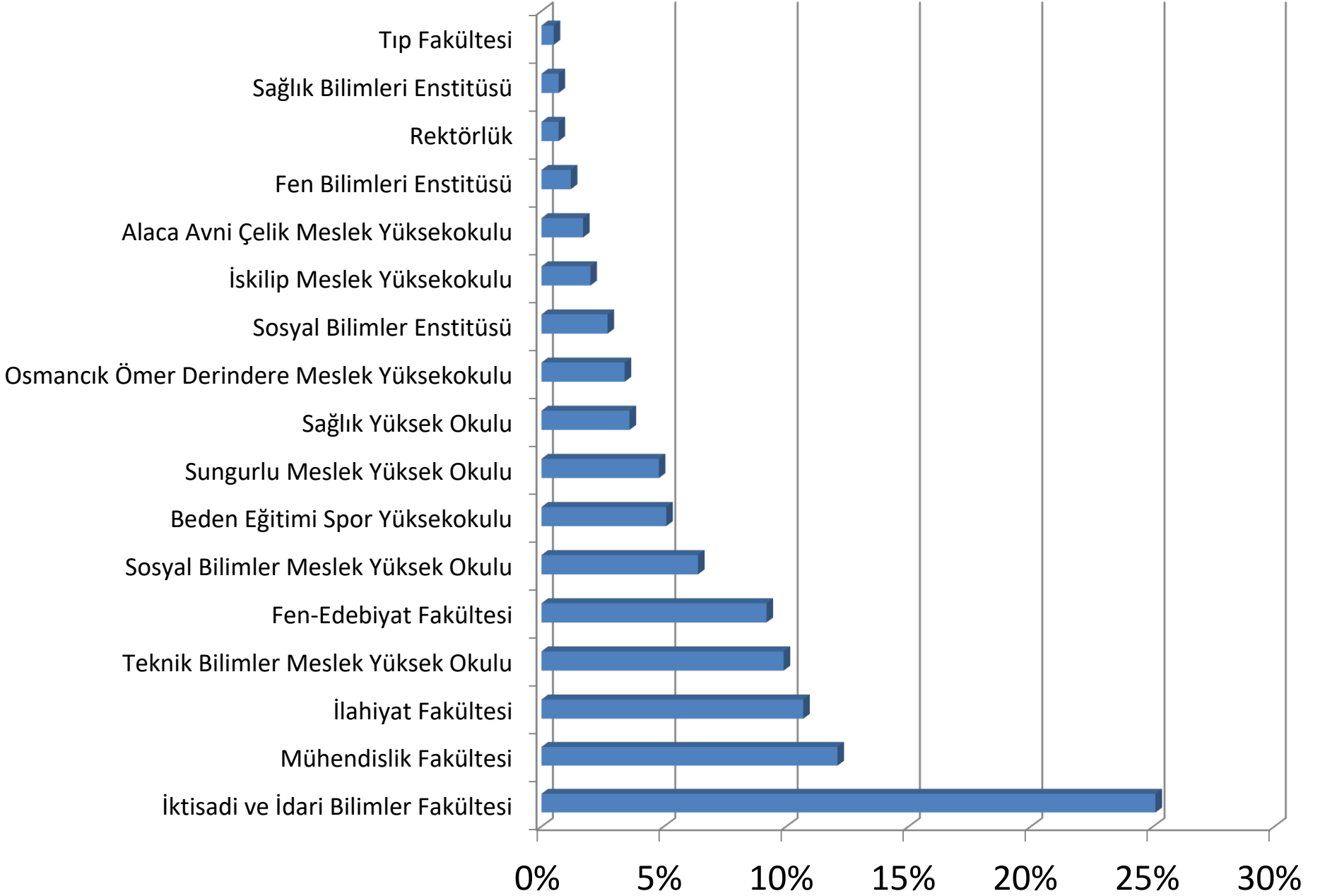
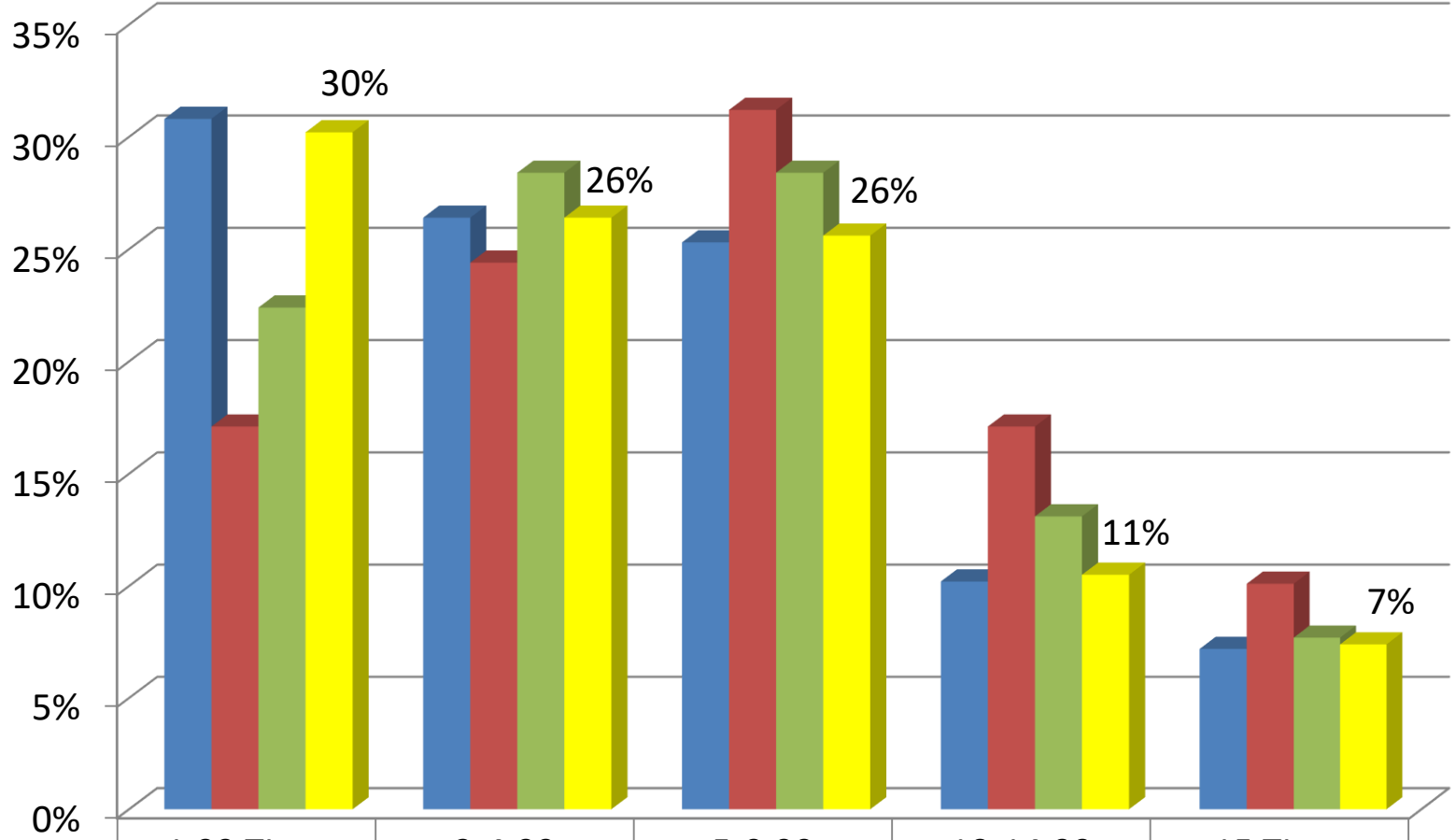


HİTİT ÜNİVERSİTESİ
YEMEKHANE VE KANTİN
HİZMETLERİ MEMNUNİYET
ANKETİ RAPORU
2016

Birimler bazında katılımcıların dağılımı

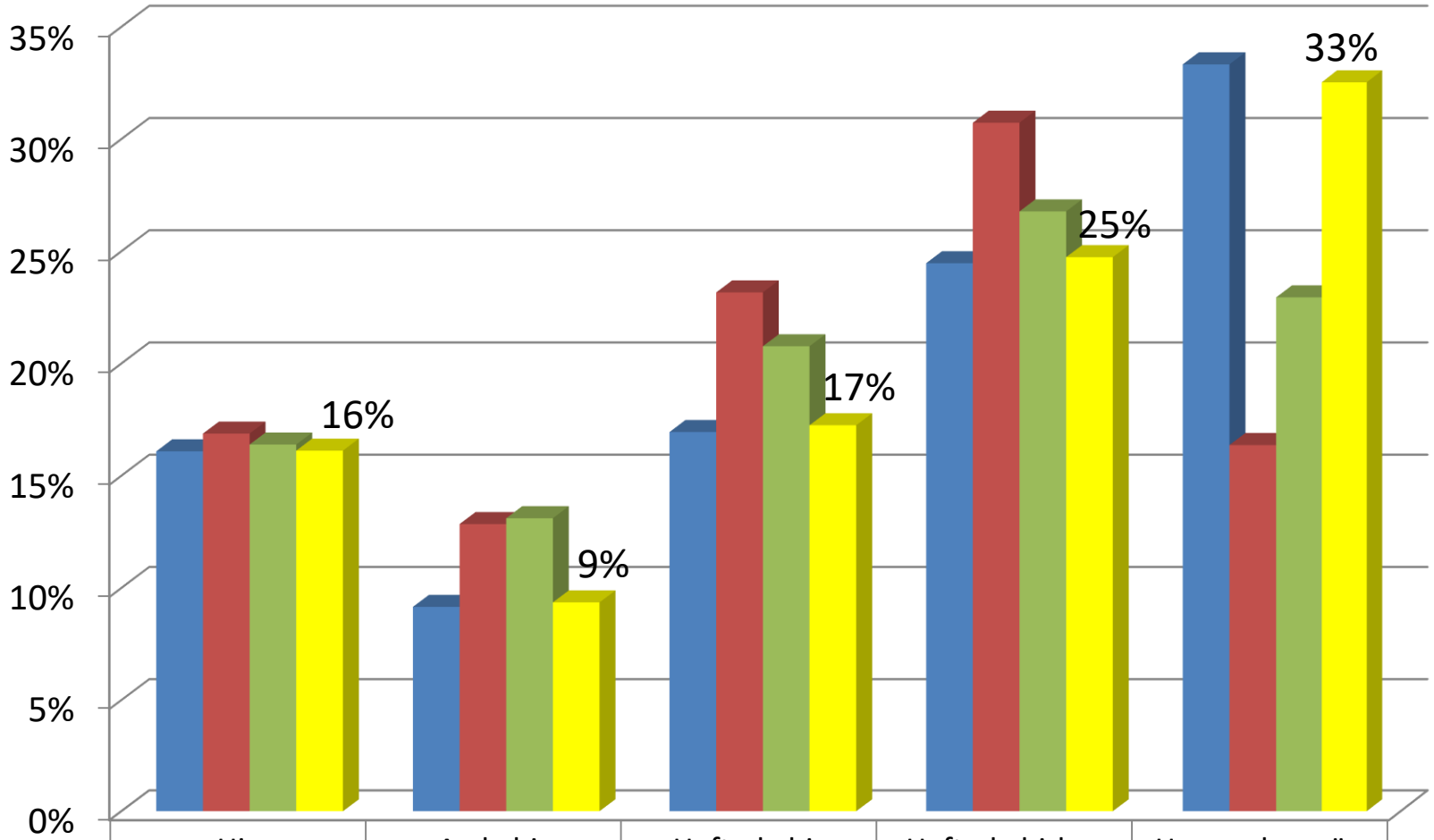


Bir öğünde yiyecek-içecek için ayırmayı uygun bulduğunuz rakam



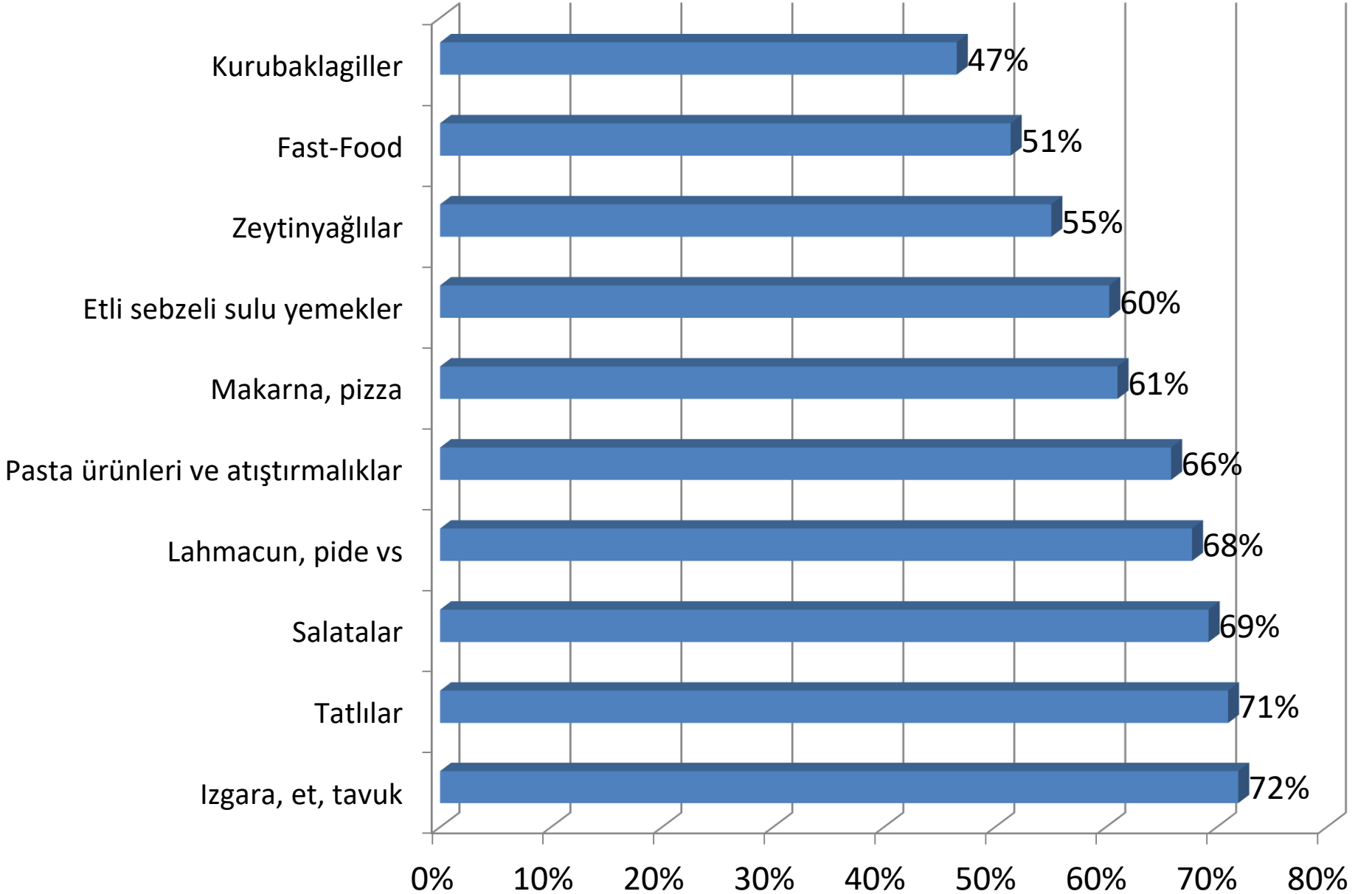
■ Öğrenci	31%	26%	25%	10%	7%
■ Akademik personel	17%	24%	31%	17%	10%
■ İdari personel	22%	28%	28%	13%	8%
■ Toplam	30%	26%	26%	11%	7%

Kampus dışında yemek ihtiyacınızı karşılama sıklığınız

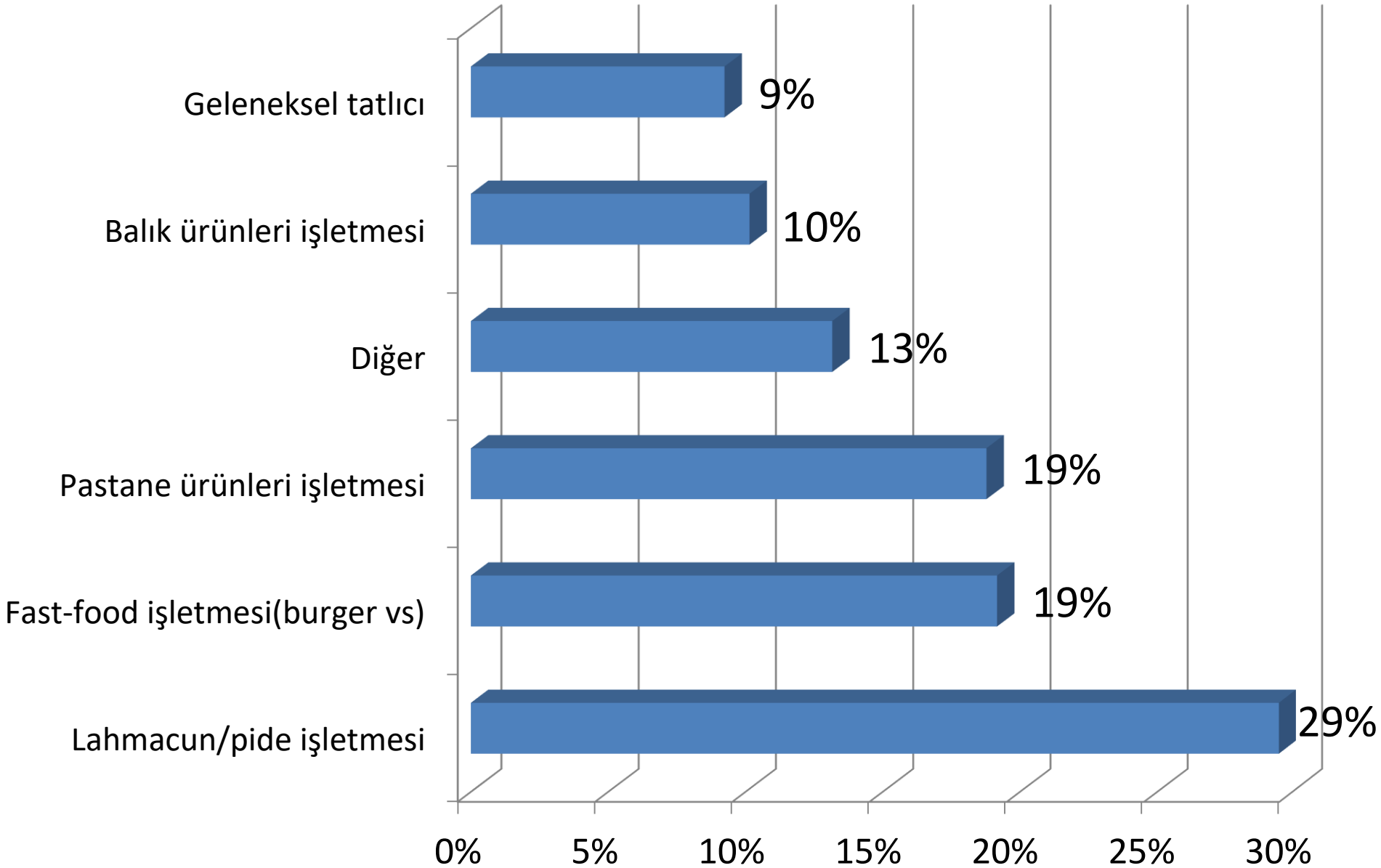


Sıklık	Öğrenci	Akademik personel	İdari personel	Toplam
Hiç	16%	17%	16%	16%
Ayda bir	9%	13%	13%	9%
Haftada bir	17%	23%	21%	17%
Haftada birkaç gün	24%	31%	27%	25%
Hemen her gün	33%	16%	23%	33%

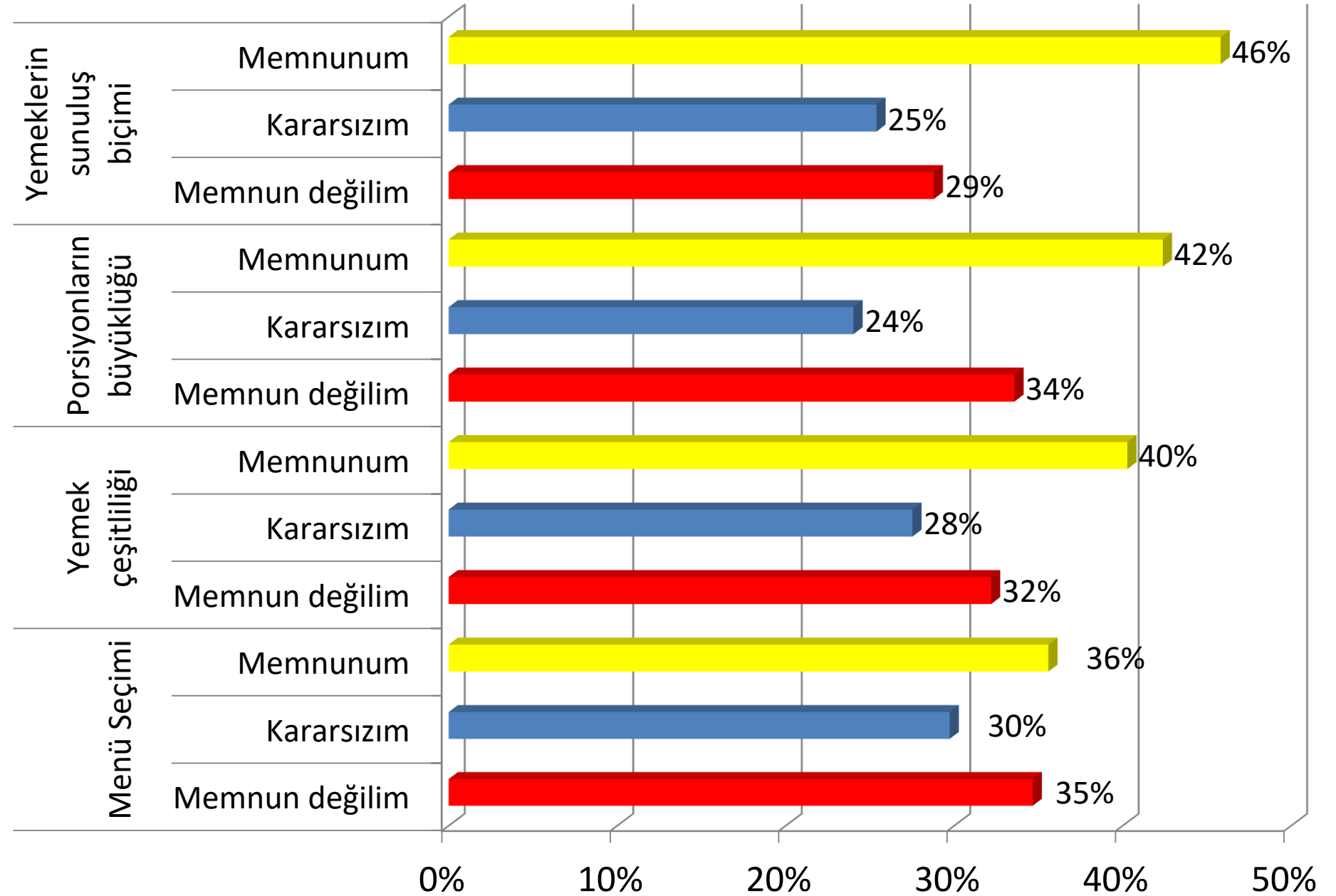
En çok tercih edilen yemekler



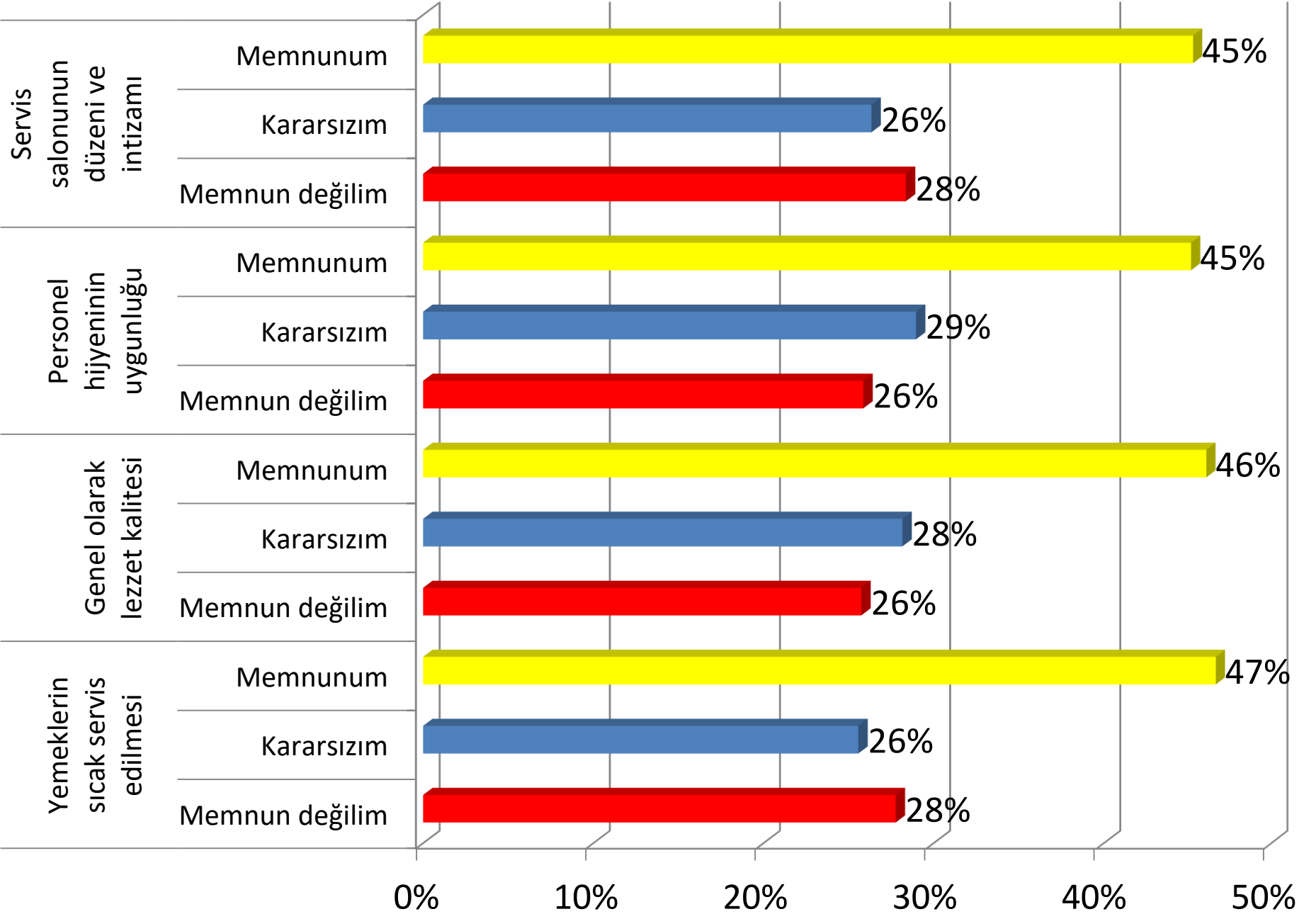
Kampus içerisinde olması istenilen yemek işletmesi



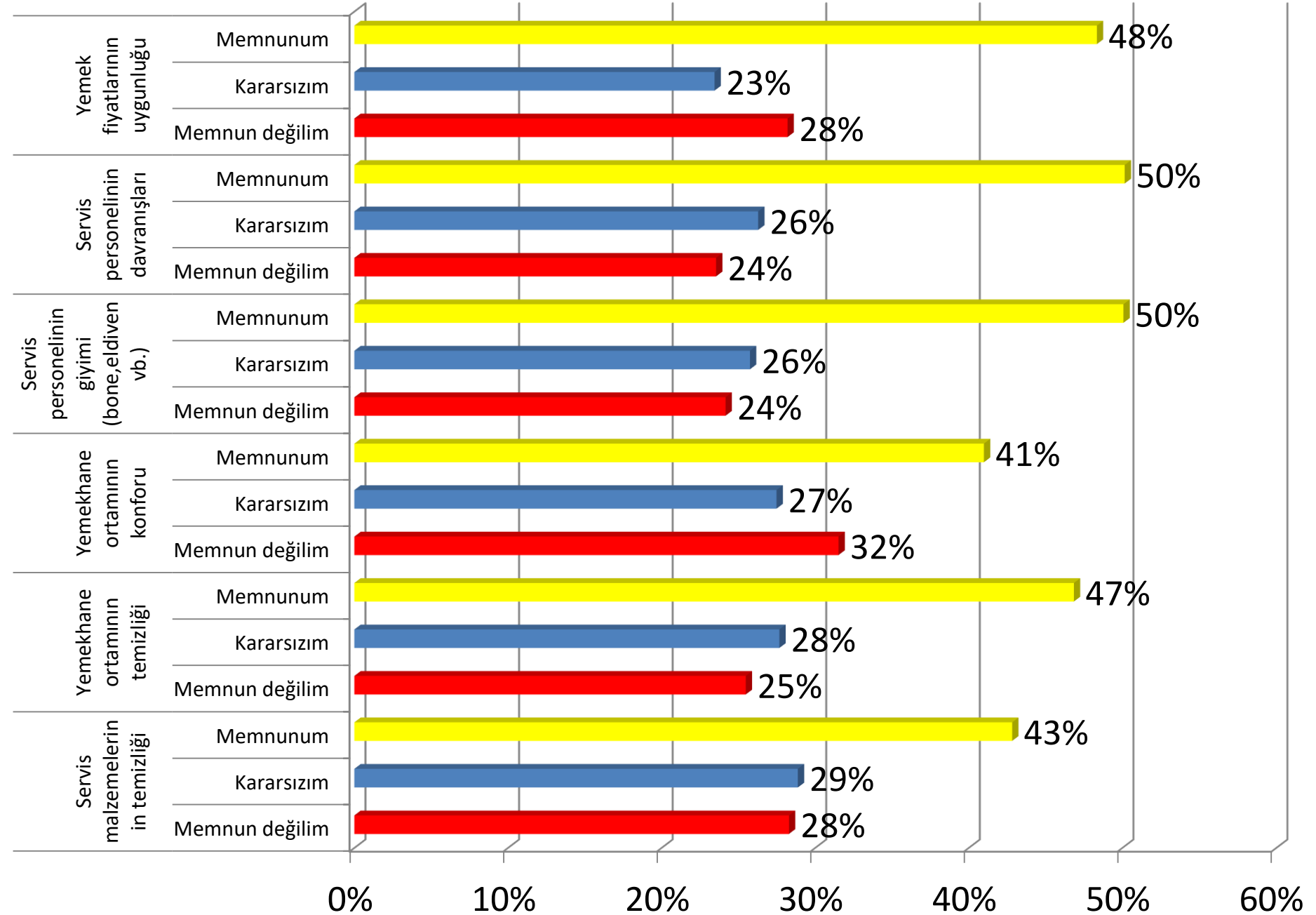
Yemekhane Hizmetlerinden Memnuniyet



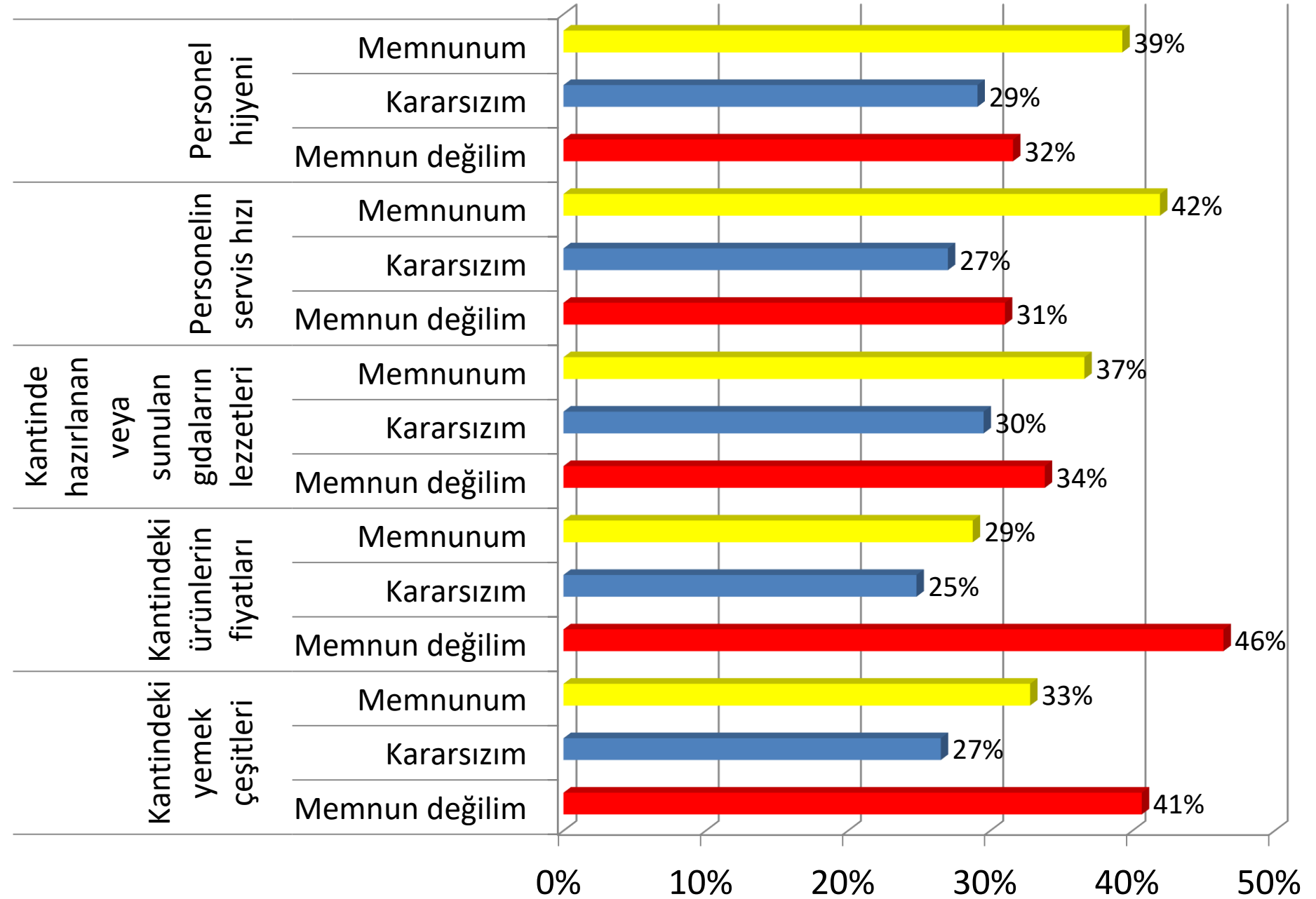
Yemekhane Hizmetlerinden Memnuniyet



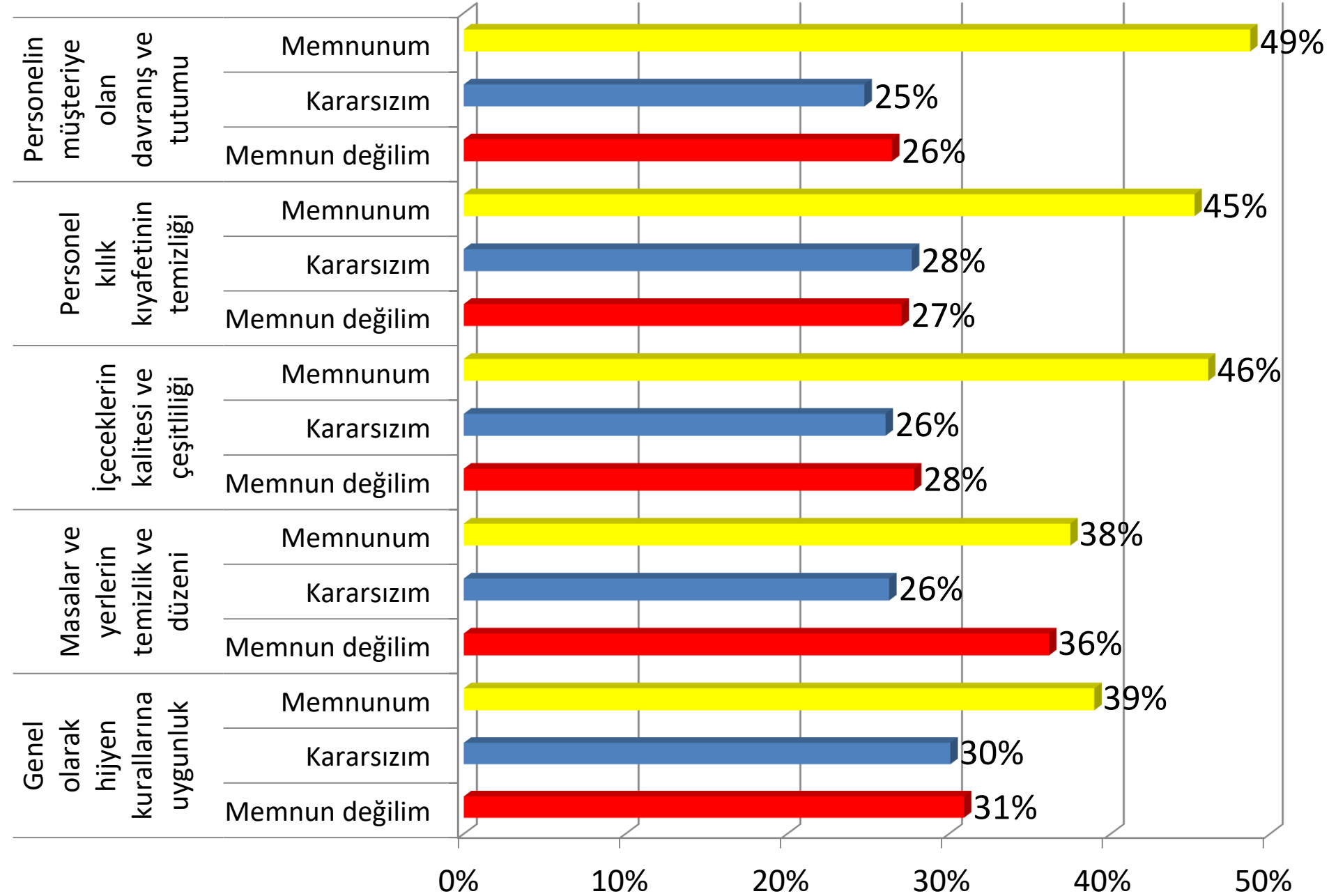
Yemekhane Hizmetlerinden Memnuniyet



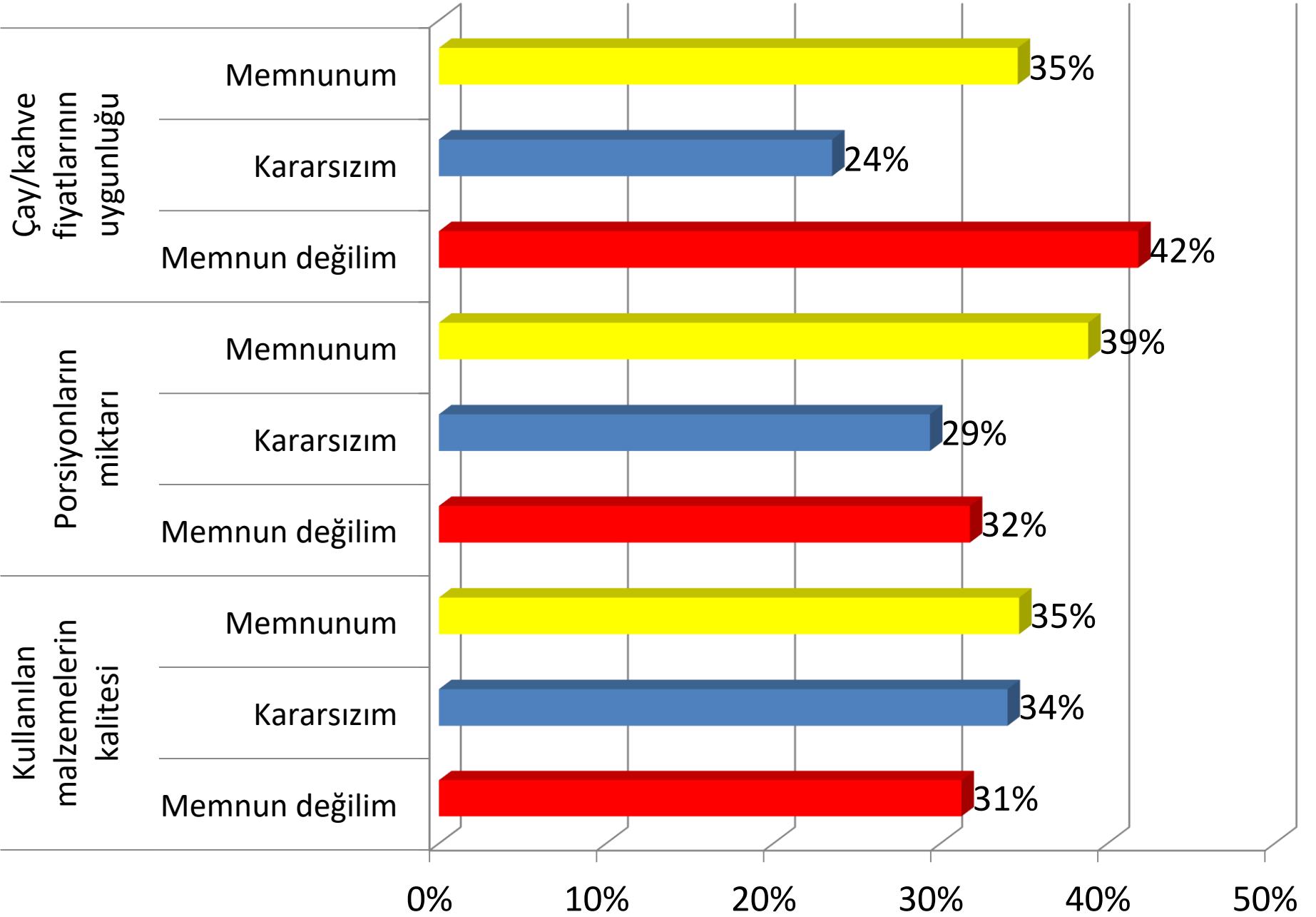
Kantin Hizmetlerinden Memnuniyet



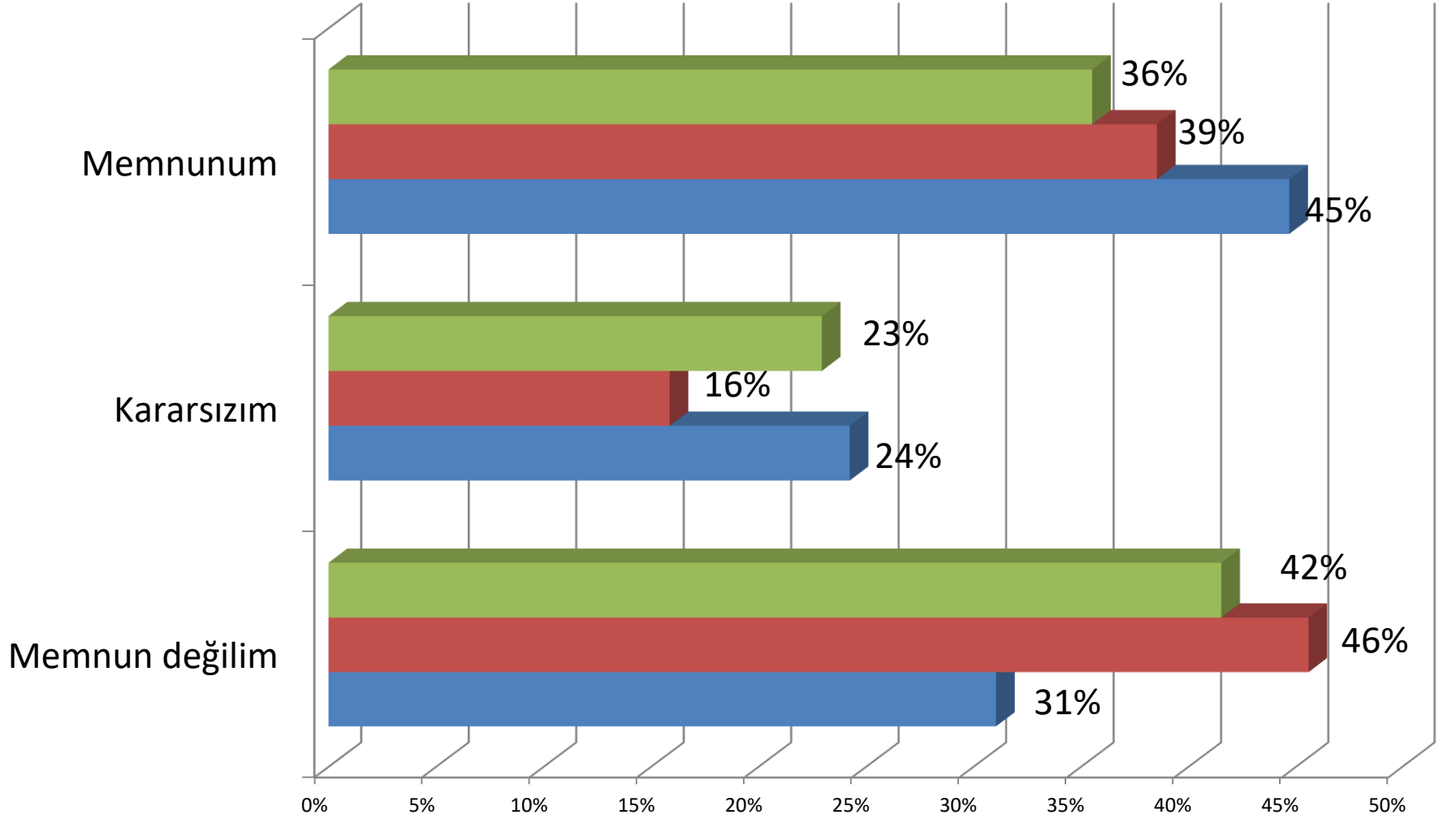
Kantin Hizmetlerinden Memnuniyet



Kantin Hizmetlerinden Memnuniyet

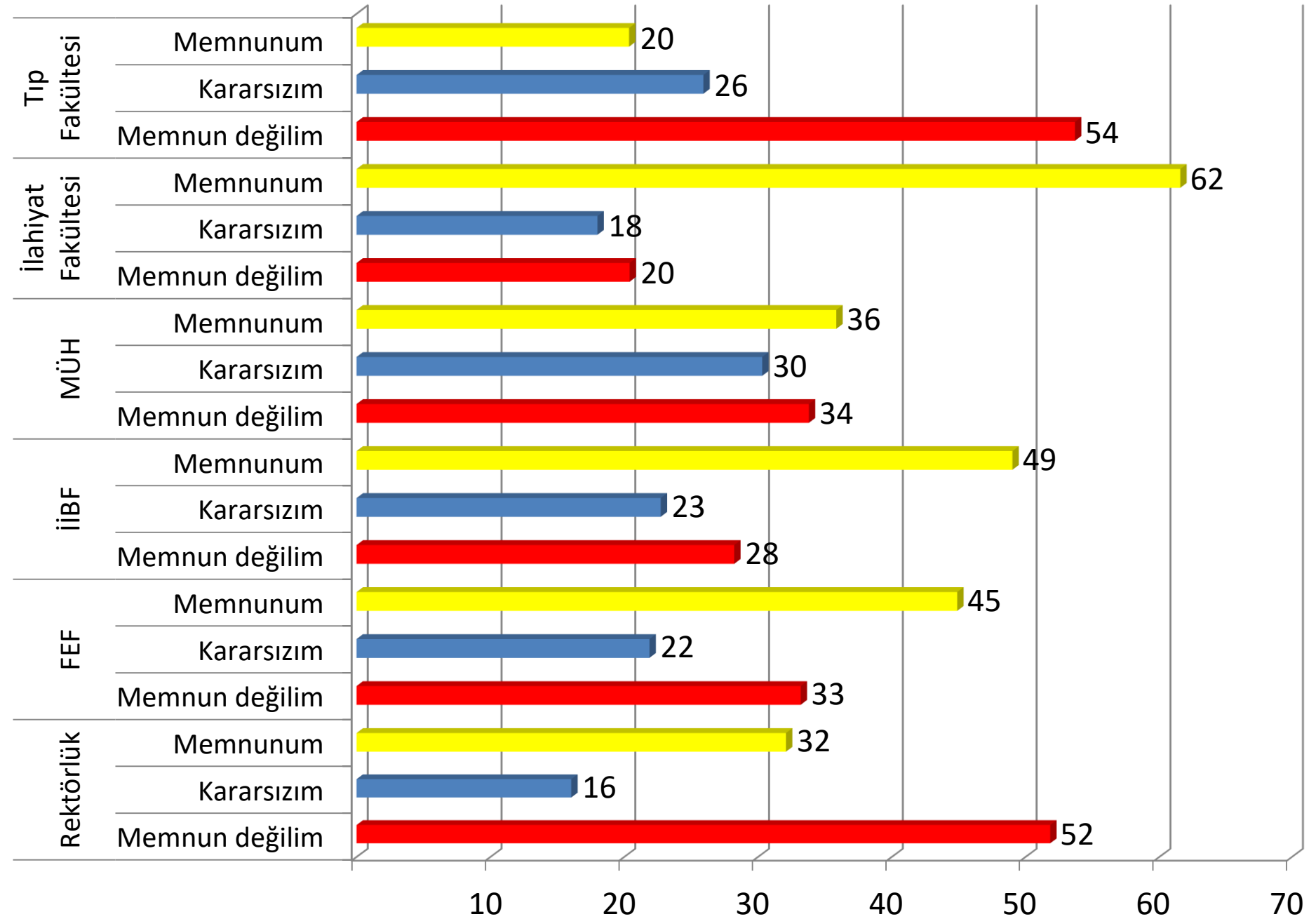


Katılımcılara Göre Genel Memnuniyet

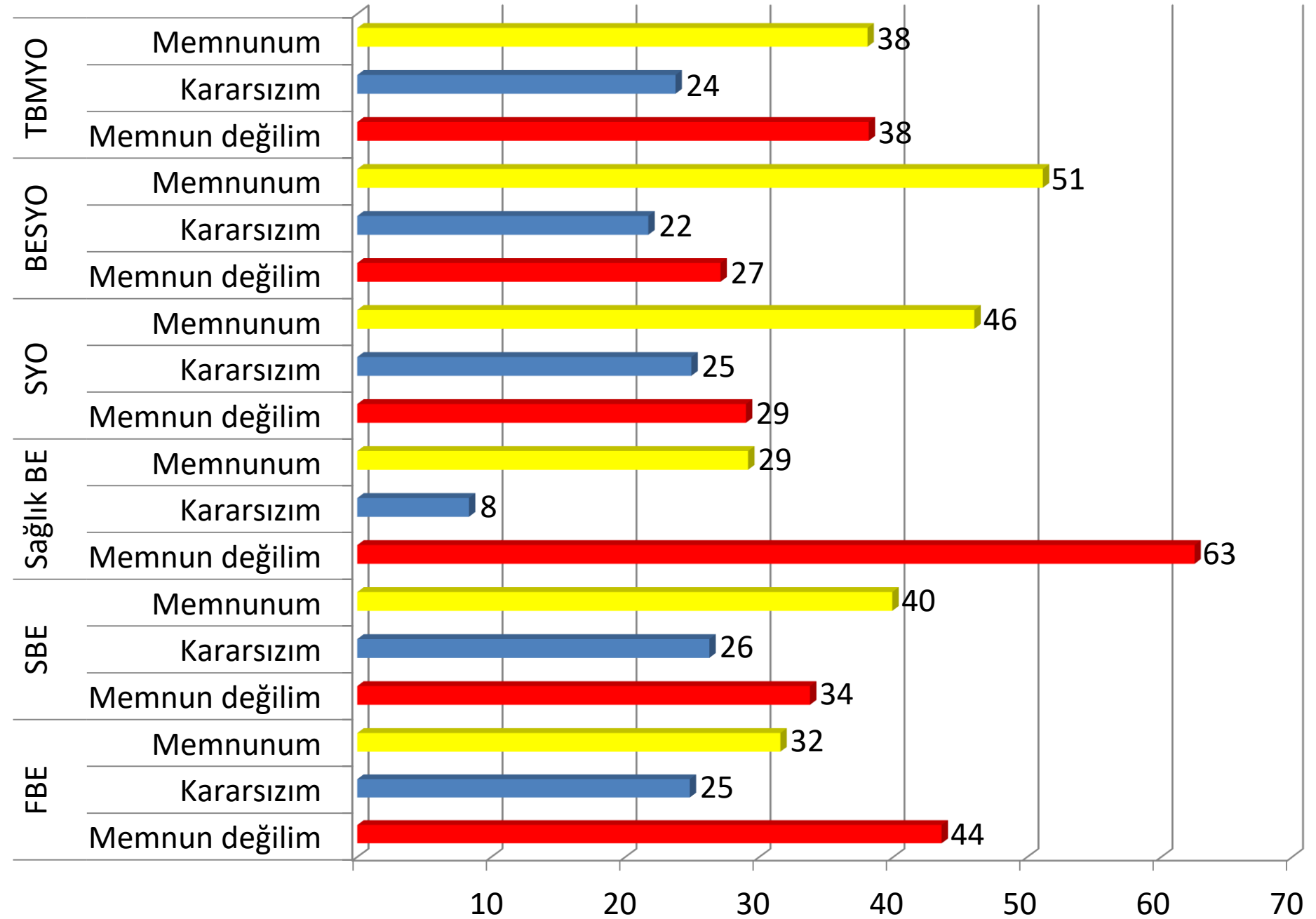


	Memnun değilim	Kararsızım	Memnunum
İdari personel	42%	23%	36%
Akademik personel	46%	16%	39%
Öğrenci	31%	24%	45%

Birimlere Göre Genel Memnuniyet



Birimlere Göre Genel Memnuniyet



Birimlere Göre Genel Memnuniyet

